

Filtration



Filter 484
Art. Nr./Réf. 92320

Filter-Druckminderer
Filter pressure regulator
Filtre à pression à filtre fritté

Made in Germany
 Einsatz bei 6 bar > 3600 Nl/min
 max. Betriebs-Überdruck 15 bar
 max. Betriebs-Überdruck 10 bar
 Betriebstemperatur 120°C
 Filterpatrone Art. Nr. 22180
 austauschbar nach 6 Monaten
 Air flow at 67 psi > 127 cfm
 max. operating pressure 145 psi
 max. operating temperature 248°F
 Filter fineness 0.01µm
 Filter cartridge Art. No. 81810 will air
 samples show a difference of 14.5 psi
 every six months at the latest
 max. air & bars > 3600 Nl/min
 max. fonctionnement à l'entrée 15 bars
 max. fonctionnement à la sortie 10 bars
 max. température de fonctionnement 120°C
 la cartouche filtrante frittée
 doit être changée 6 mois au plus tard



SATA GmbH & Co. KG
 70806 Kornwestheim/Germany

blow / 10 sec
 blows / 3 sec
 soufflé / 10 sec
 max. 90 sec
 max. 30 sec
 max. 90 sec

Fine filter
Filtre submicronique

Made in Germany
 Einsatz bei 6 bar > 3600 Nl/min
 max. Betriebs-Überdruck 10 bar
 Betriebstemperatur 120°C
 Filterfinenheit 0,01µm
 Filterpatrone Art. Nr. 81810 bei
 einer Differenz von 14,5 psi
 alle sechs Monate
 Air flow at 67 psi > 127 cfm
 max. operating pressure 145 psi
 max. operating temperature 248°F
 Filter fineness 0.01µm
 Filter cartridge Art. No. 81810 will air
 samples show a difference of 14.5 psi
 every six months at the latest
 max. air & bars > 3600 Nl/min
 max. fonctionnement 10 bars
 max. température de fonctionnement 120°C
 la cartouche de filtres fin RM. 81810
 permettra de détecter une
 différence en pression de 1 bar
 toutes les six mois au plus tard



SATA GmbH & Co. KG
 70806 Kornwestheim/Germany

Aktivkohlefilter
Activated charcoal filter
Filtre à charbon actif

Made in Germany
 Einsatz bei 6 bar > 3600 Nl/min
 max. Betriebs-Überdruck 10 bar
 Betriebstemperatur 60°C
 Aktivkohlepatrone Art. Nr. 85373
 austauschbar nach 3 Monaten
 Air flow at 87 psi > 127 cfm
 max. operating pressure 145 psi
 max. operating temperature 140°F
 Filter content 0.005 mg/m³ (68°F, 105 psi)
 max. amount of activated charcoal cartridge
 Art. No. 85373 after 3 months at the latest
 max. air & bars > 3600 Nl/min
 max. fonctionnement 10 bars
 max. température de fonctionnement 60°C
 la quantité d'huile 0,005 mg/m³ (20°C, 7 bars)
 max. remplacement de la cartouche à charbon actif
 Art. No. 85373 après 3 mois au plus tard



SATA GmbH & Co. KG
 70806 Kornwestheim/Germany

SATA® filter 414™/ 424™/ 434™/ 464™

SATA filter 414/424/434/464

Technical Data	Air inlet: G1/2, female thread
	Air outlet: G1/2, female thread and/or G 1/4 male thread
	Max. inlet operating pressure: 15.0 bar / 217 psi
	Max. outlet operating pressure: 10.0 bar / 145 psi
	Air flow at 6.0 bar: 3,600 NI/min / 129 cfm @ 90 psi
	Max. ambient temperature: 248° F
	Max. ambient temperature w/ activated charcoal: 140° F



Pressure Regulator/water separator

92288	SATA 420 Line Pressure Regulator High air volume of 141 cfm, up to 225 psi inlet, G 1/2 internal inlet & outlet thread	
92213	SATA filter 414 5 micron oil / water separator with automatic condensation discharge, with ball valve air connection module but without regulator. 1/2 inch internal inlet thread and two 1/4 inch external outlet thread. (2 x G 1/4 male thread)	
92254	SATA filter 414L (in-line) 5 micron oil / water separator with automatic condensation discharge, in-line installation. 1/2 inch internal inlet/outlet thread. (G 1/2 female thread)	
92221	SATA filter 424 5 micron oil / water separator unit with automatic condensation discharge, pressure regulator and ball valve air connection module. 1/2 inch internal inlet thread and two 1/4 inch external outlet thread. (2 x G 1/4 male thread)	
92262	SATA filter 424 L (in-line) 5 micron oil/water separator unit with automatic condensation discharge and pressure regulator. 1/2 inch internal inlet/outlet thread.	

Fine filter

92239	SATA filter 434 0.01 micron filter unit with ball valve air connection module. Provides 99.998% clean air. Compressed air must be pre-filtered when using this unit. 1/2 inch internal inlet thread and two 1/4 inch external outlet thread. (2 x G 1/4 male thread)	
92270	SATA filter 434L (in-line) 0.01 micron filter unit. Provides 99.998% clean air. Compressed air must be pre-filtered when using this unit. 1/2 inch internal inlet/outlet thread.	

Activated charcoal filter

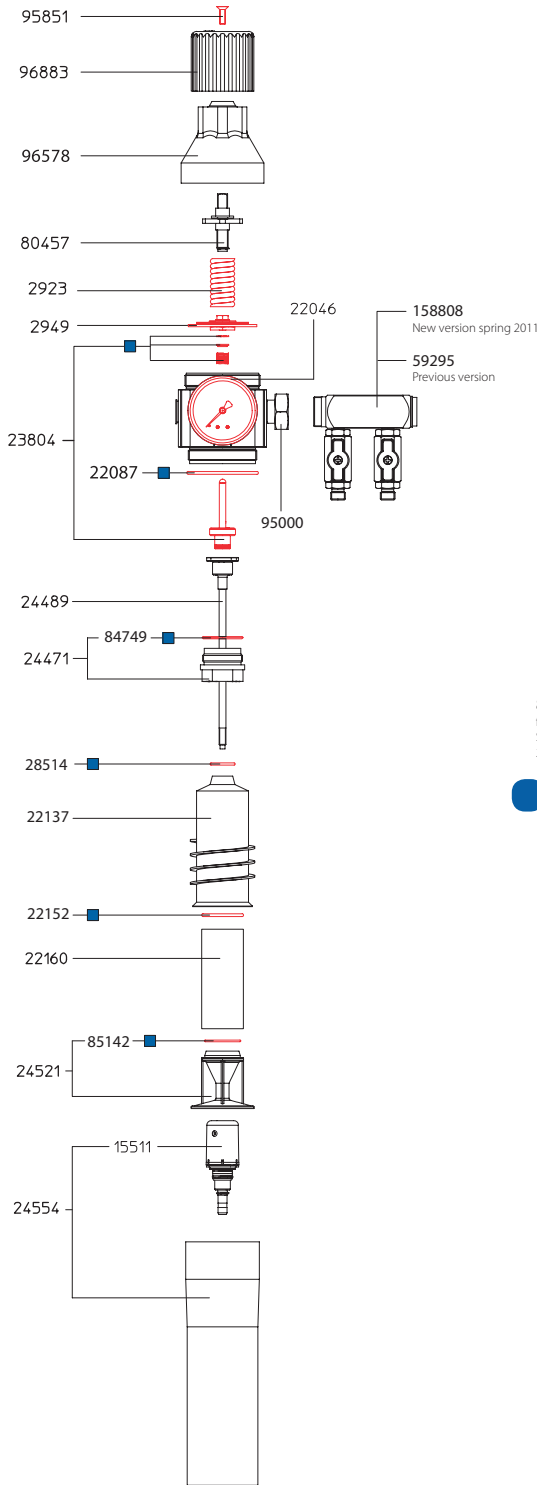
92247	SATA filter 464 Single-stage activated charcoal filter, with outlet module (2 x G 1/4 male thread)	
141473	SATA filter 464A Add-on unit with fittings without module. To retrofit SATA filter 444 to 484	
92247L	SATA filter 464L (in-line) Line filter unit without fitting and module.	

Spare Parts SATA® filter 414™/ 424™/ 434™/ 464™

Order No./ Desc.	
2949	Diaphragm
15511	Auto. condensate valve only
22046	Pressure gauge
22087	"O" ring
22129	Teflon ball valve
22137	Cyclone tube
22152	"O" ring
22160	Sintered bronze filter
23804	Pressure valve, complete
24471	PVC nut with "O" rings
24489	Mounting rod with pressure valve
24521	Baffle with "O" ring
24554	Housing tube with auto. cond. valve
24562	Adapter with "O" ring
28506	"O" ring
28514	"O" ring
73890	Threaded rod
80457	Spindle, complete
81810	Fine filter
84749	"O" ring, 33 x 2
84871	Housing Tube, 2nd Stage
85142	"O" ring, 30 x 1.5
85373	Activated charcoal cartridge
94979	Repair kit, 400
95000	Union fitting, 1/2"
95851	Countersunk screw
96578	Valve housing
96750	Packing Kit
96883	Regulator adjusting knob
158808	Manifold, 2 drop

SATA filter 424

● Stage 1

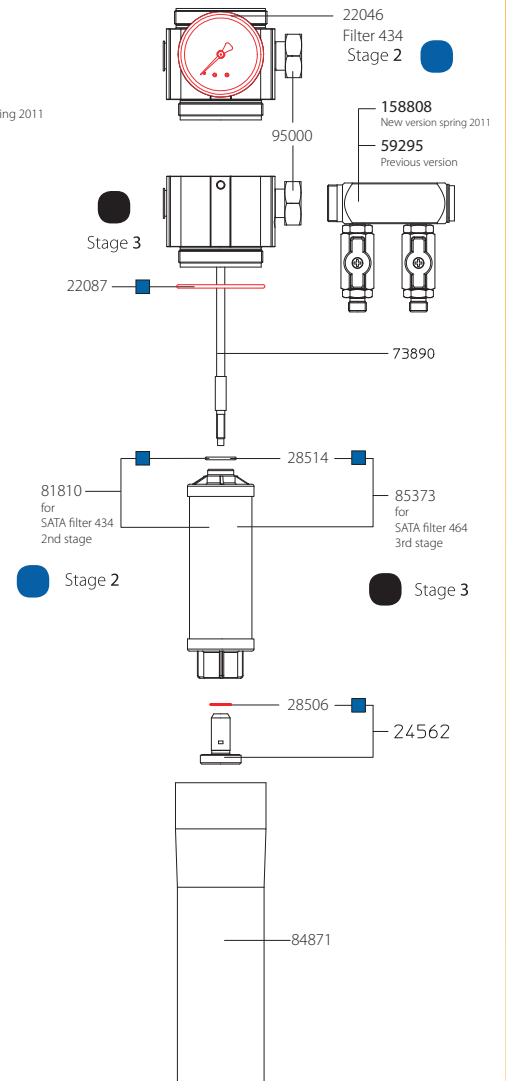


SATA filter 434

● Stage 2

SATA filter 464

● Stage 3



Order No./ Desc.
94979
Repair kit
96750
Packing set

Technical modifications and printing errors reserved