



## Equipment

Designation	Cartridge	Fluid Inlet fitting	Suction	Drain rod	Atomizing air regulator	Fluid pressure regulator	Filter pump output	Hoses	Part number
35C50 F1/2 wo Filter wo Rod	MB-A	F1/2 BSP	-	-	1	•	-	-	151148000
35C50 M26x125 wo Rod wo filter	MB-A	M26x125	-	-	1	•	-	-	151148050
35C50 M26x125 + Rod wo Filter	MB-A	M26x125	D25	-	1	•	-	-	151148250
35C50 M26x125 + Rod + Filter	MB-A	M26x125	D25	•	1	•	•	-	151148100
35C50 M26x125 wo Filter Wo Rod	MB-A	M26x125	-	-	-	•	-	-	151148200
35C50 F1/2 wo Filter wo Rod	MB-A	F1/2 BSP	-	-	-	•	-	-	151148150
35C50 M126x125 + Rod wo Filter	MB-A	M26x125	D25	-	-	•	-	-	151148300
35C50 M26x125 Filter + Rod	MB-A	M26x125	D25	•	-	•	•	-	151148350

## Accessories

Designation	Part number
-------------	-------------

## Kits

Designation	Cartridge	Fluid Inlet fitting	Suction	Drain rod	Atomizing air regulator	Fluid pressure regulator	Filter pump output	Hoses	Gun	Swivel	Tip	Part number
Xcite 200 + 35C50	MB-A	M26x125	D25	-	1	•	-	ø4.8 - 7.5m	Xcite™ 200	•	12,114	151148400
Xcite 200 + 35C50	MB-A	M26x125	D25	-	1	•	•	ø4.8 - 7.5m	Xcite™ 200	•	12,114	151148450
Sflow 275 + 35C50	MB-A	M26x125	D25	-	-	•	•	ø4.8 - 6m + ø3.2 1.6m	SFlow™ 275	•	12,13	151148550

## Spare part

Designation	Part number
-------------	-------------

## 35C50 Airmix®

Paint pump

Airmix® / Pumps



AIRMIX® PRODUCTIVITY FOR ALL

- Designed for long-lasting industrial use
- Fast color changes with minimum solvent consumption
- Simple design to minimize maintenance time and operation



AGRICULTURAL



INDUSTRIAL



WOOD



# 35C50 Airmix®

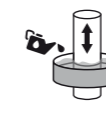
## Paint pump

The 35C50 Airmix® paint pump ensures constant and pulse-free delivery for superior, industrial finishing.

## Technologies



GT Sealing



Cup Lub



2 Ball



Triple Chrome Layer

The **35C50 Airmix® paint pump** will deliver excellent performance and outstanding benefits because of our proven pumping technology. With a powerful air motor, the 35C50 can feed up to (2) Airmix® or (2) SFlow™ Airspray spray guns. It can handle material viscosities from 20 cps up to 5000 cps with very low air consumption. It comes with an optimized volume fluid section for fast color changes with minimal material loss.

The **35C50 Airmix® paint pump packages** are available in **wall-mount versions** with cart mounting as an option. Packages are available with (1) Xcite™ 200 bar Airmix® manual spray gun equipped with a 12.114 tip and 7.5 m (25ft) air and fluid hoses. An **Airless®** version with the **SFlow™ spray gun** is also available. A large variety of options are available to meet all customer requirements.



## Technical data table

Designation	Value	Unit: metric (US)
Pressure Ratio	35	
Maximum Fluid Pressure	210 (3000)	bar (psi)
Recommended Fluid Output	1500 (0.4 gal/min)	cc/mn (cfm)
Maximum Fluid Output	3000 (0.8 gal/min)	cc/mn (cfm)
Maximum Air Pressure	6 (87)	bar (psi)
Air Consumption	15	m³/h (cfm)
Weight	8	kg (lbs)
Maximum Temperature	60 (140)	°C (°F)
Fluid Output at 30 cycles/mn	1.5 (0.4)	l/min (gal/mn)
Fluid Volume Per Cycle	50 (0.013 gal)	cc (oz)
Free Flow Rate	5 (1.3)	l/mn (gal/mn)
Fluid Output at 15 Cycles	750 (0.19 gal/min)	l/mn
Seal Packings	PE UHMW	
Height	58.5 (23)	cm (in)
Width	23.5 (9.05)	cm (in)
Depth	23.5 (9.05)	cm (in)
Wetted parts stainless steel	♦	

## Performance

- 1 Quiet and balanced air motor for constant delivery
- 1 There is minimal pulsation due to quick air motor change over at low air pressures
- 2 Stainless-steel fluid section compatible with a wide range of materials including water-based paints
- 3 Designed to eliminate dead zones for quick color changes
- ♦ Pulse-free for a superior finish
- ♦ Able to flush and prime at very low air pressures (0.6 bar/8.5 psi)

## Productivity

- 3 Large foot valve to handle high viscosity materials up to 5,000 cPs - carbide seat
- 4 Small fluid section, minimal material loss during color changes
- 5 Closed construction decreases the risk of injuries and protects the lubricant from external contamination
- 5 Leak indicator weep hole for fast visual inspection
- 6 Easy rotating outlet fitting to fit various configurations

## Sustainability

- 1 Stall-free Differential Air Motor won't ice up
- 3 Easy to service with direct access to the suction valve
- 4 Single piece built-in cartridge with no dead zone
- 6 Easy coupling for a quick disassembling
- ♦ Mobile seal located on the piston ensures the cleaning of the fluid section internal wall while the pump is in operation
- ♦ Low maintenance, no external air distributor assembly. 45% fewer parts vs competition
- ♦ Triple chrome-plated piston parts compatible with most materials
- ♦ Magnetic reversing valve to eliminate pump surge
- ♦ Reduced spare parts: 50% fewer parts vs competition



## Description

